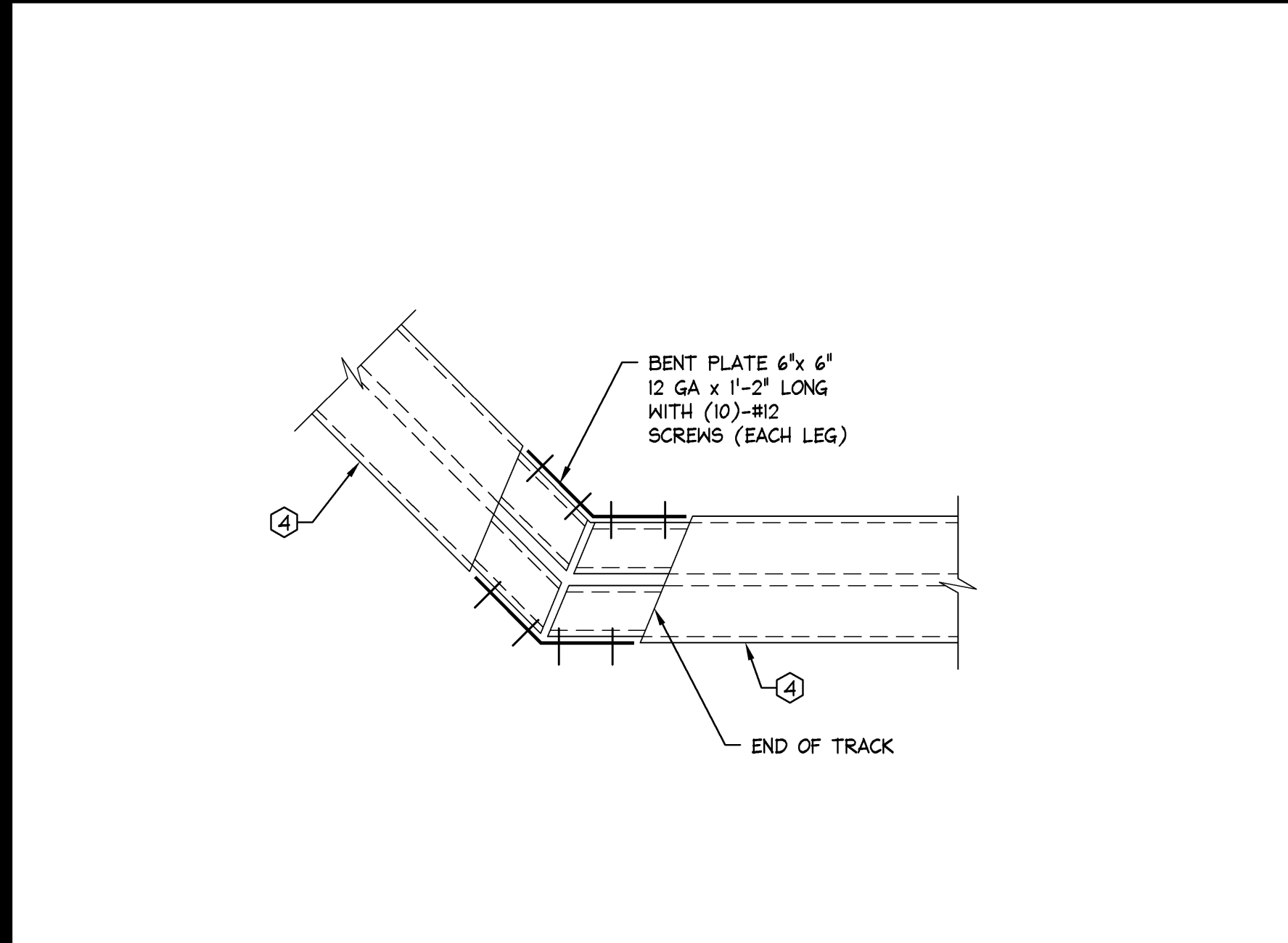
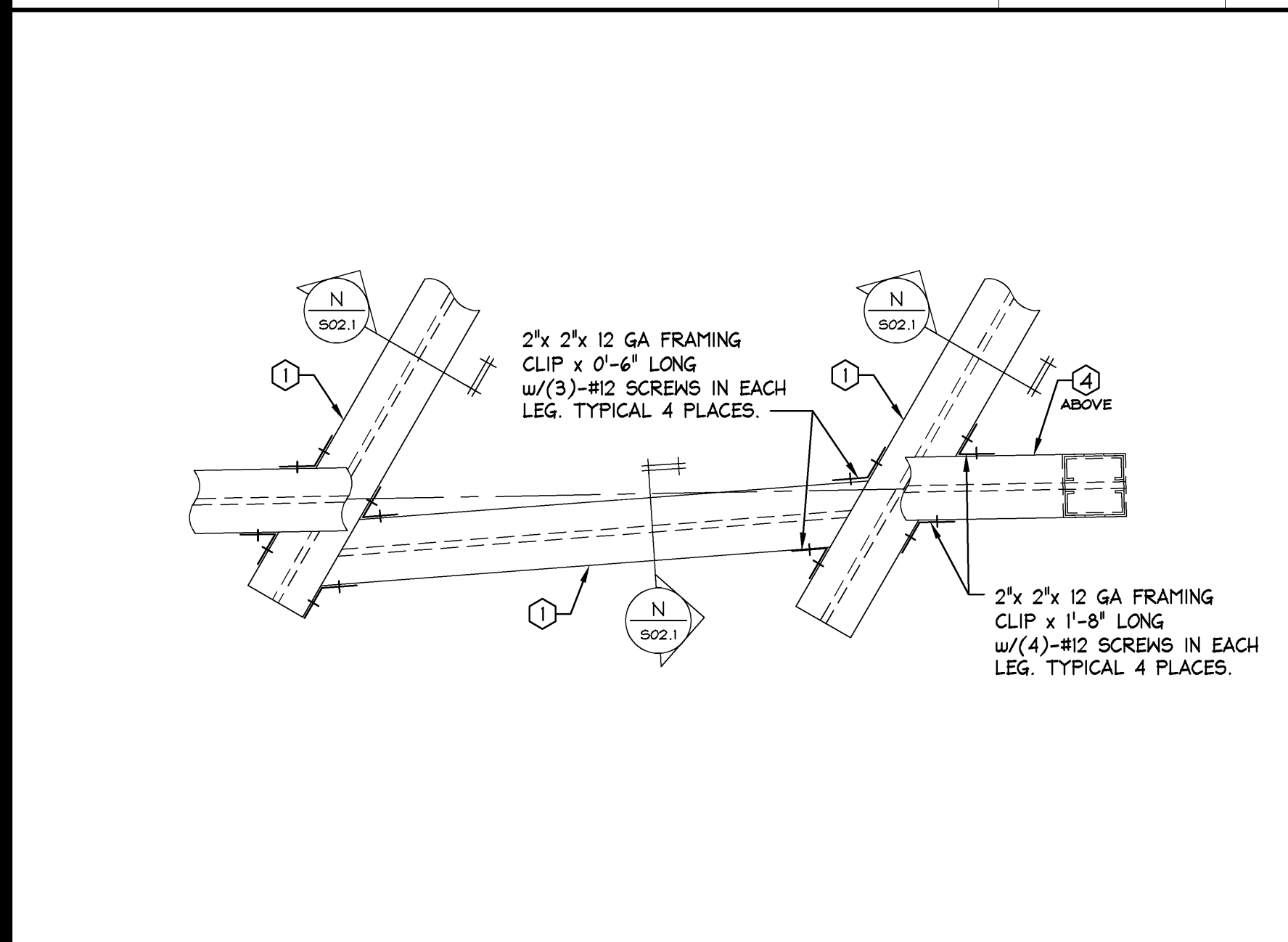




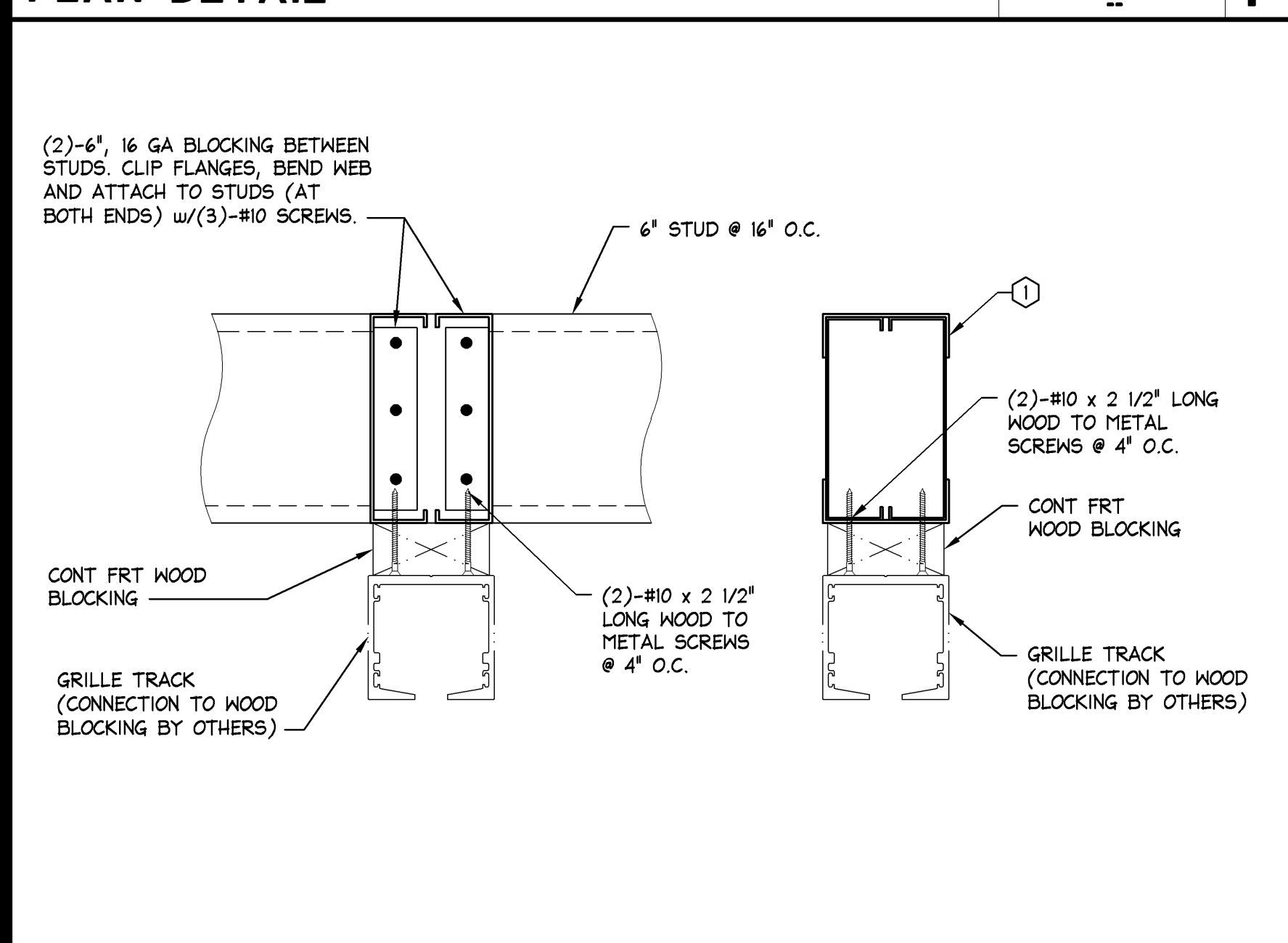
NOT USED N.T.S. S



BEAM CONNECTION N.T.S. R



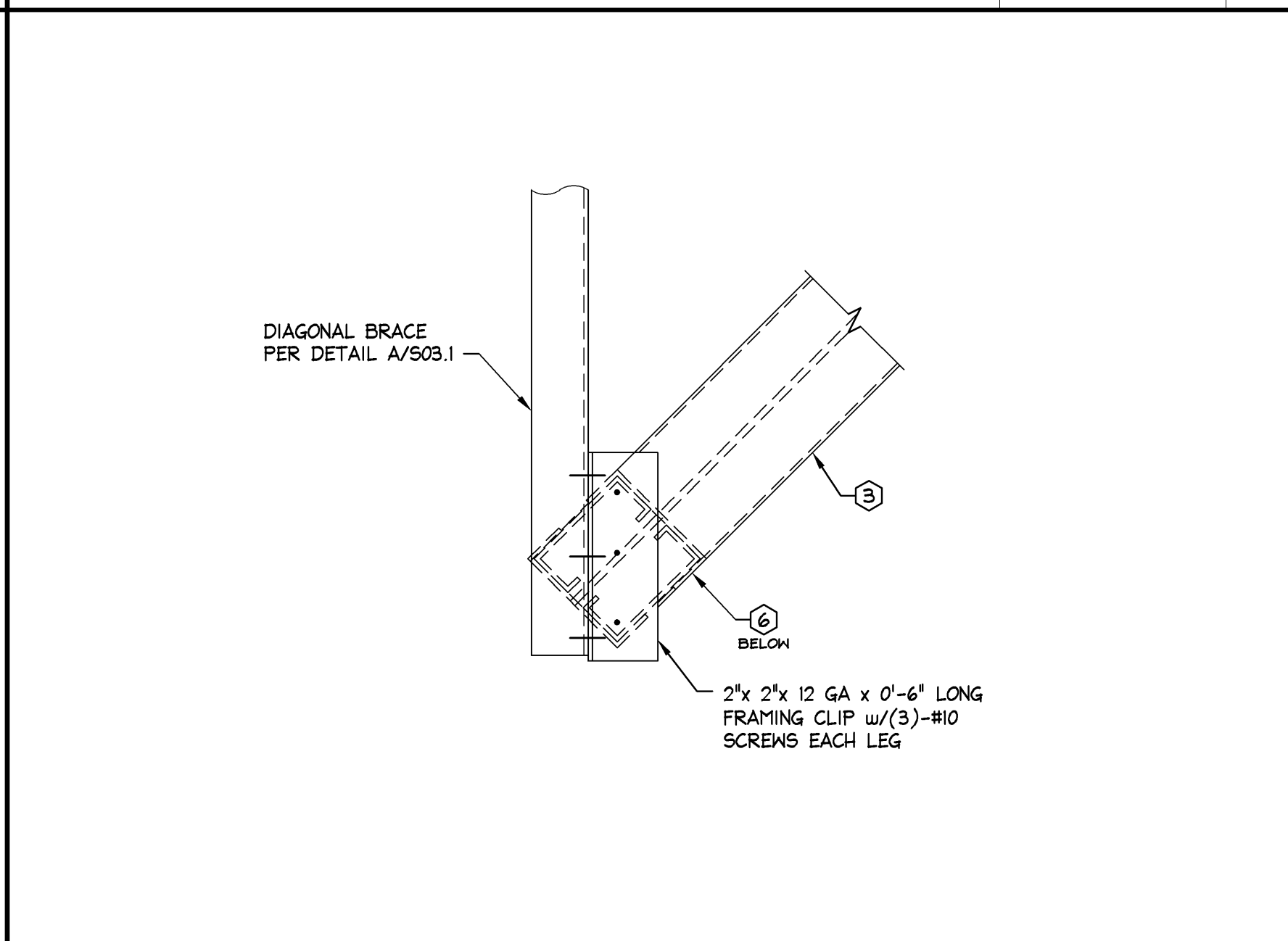
PLAN DETAIL 1 1/2" = 1'-0" P



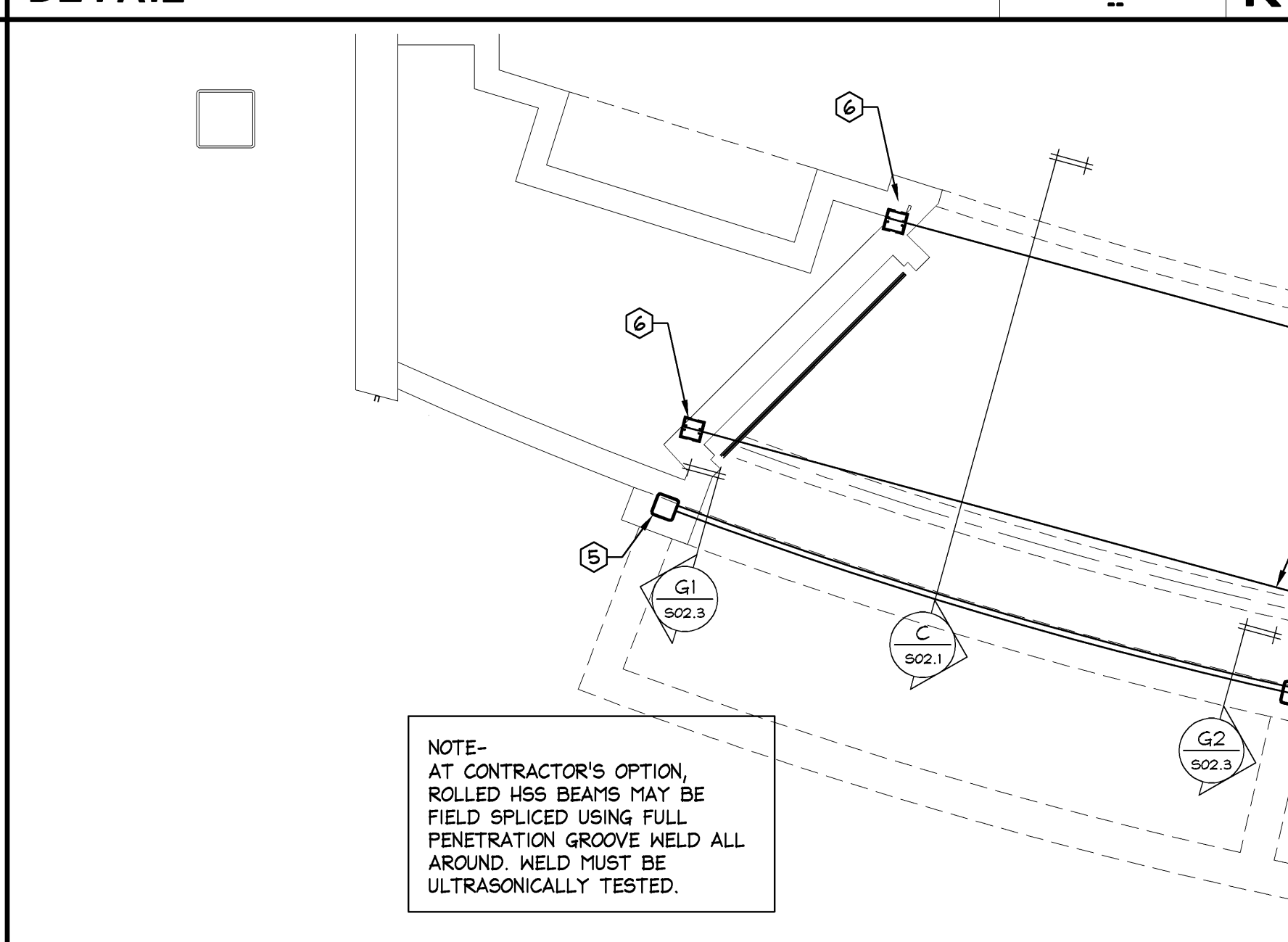
DETAIL N.T.S. N



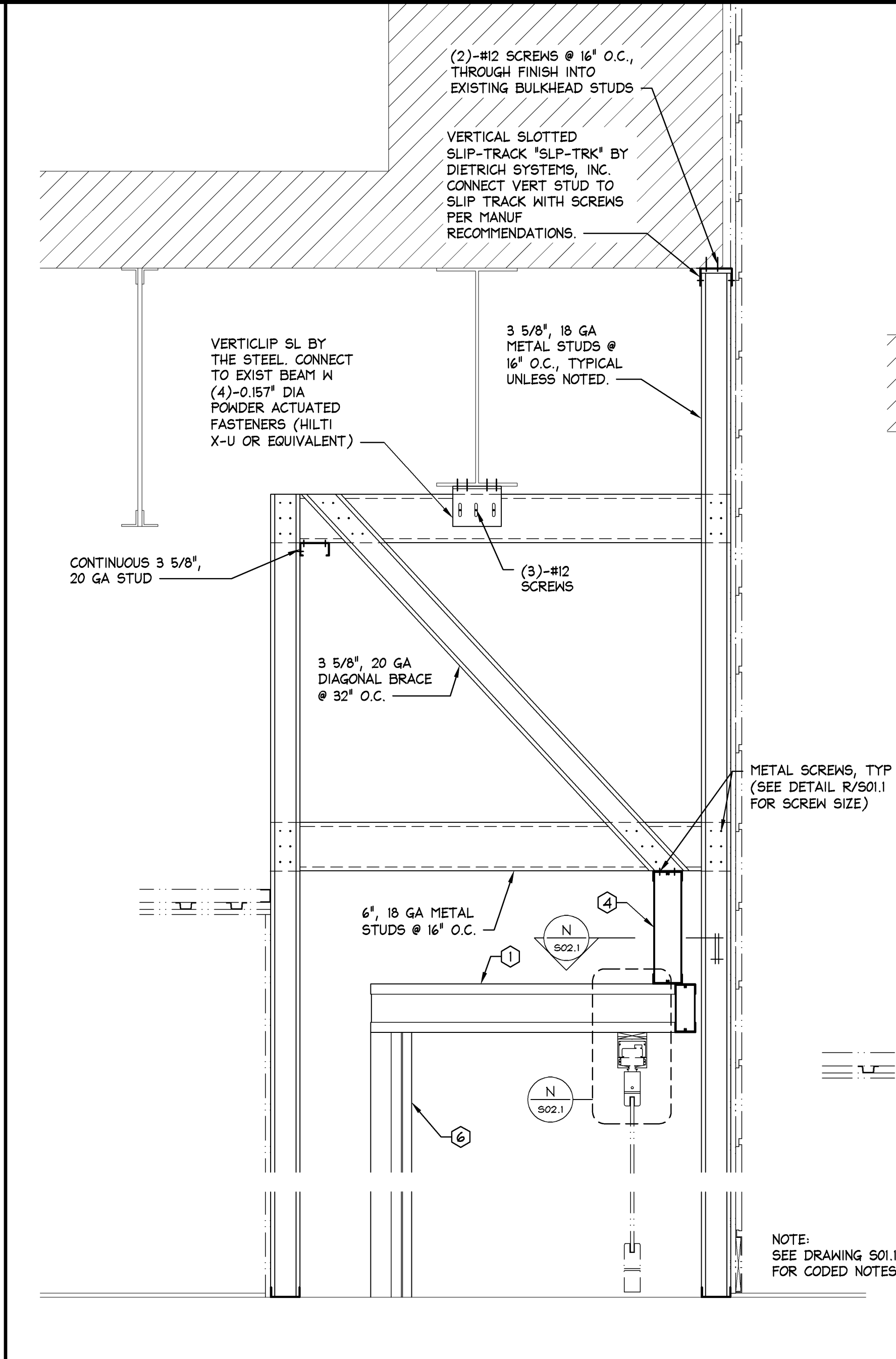
STOREFRONT SECTION 1" = 1'-0" L



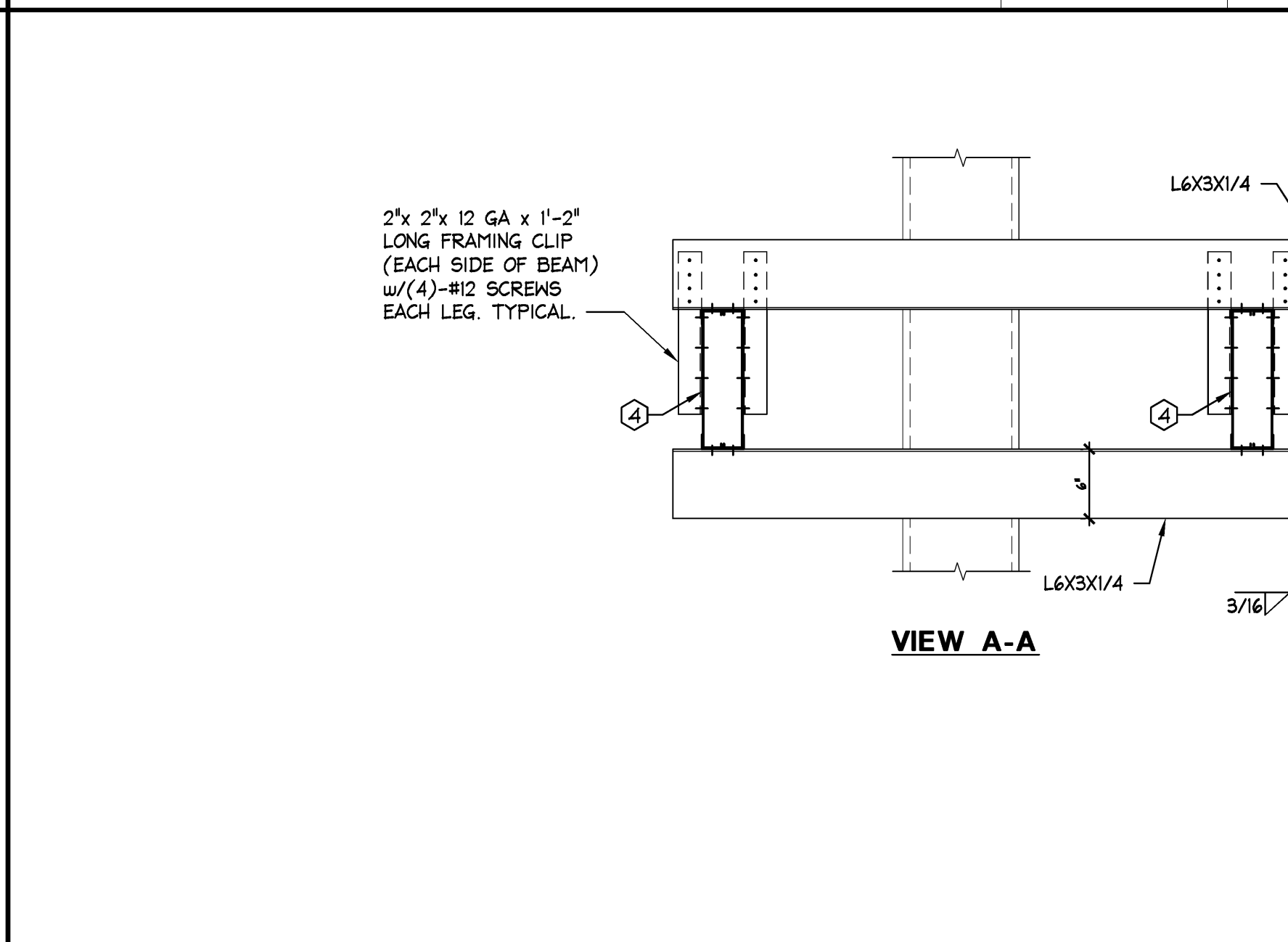
DETAIL N.T.S. K



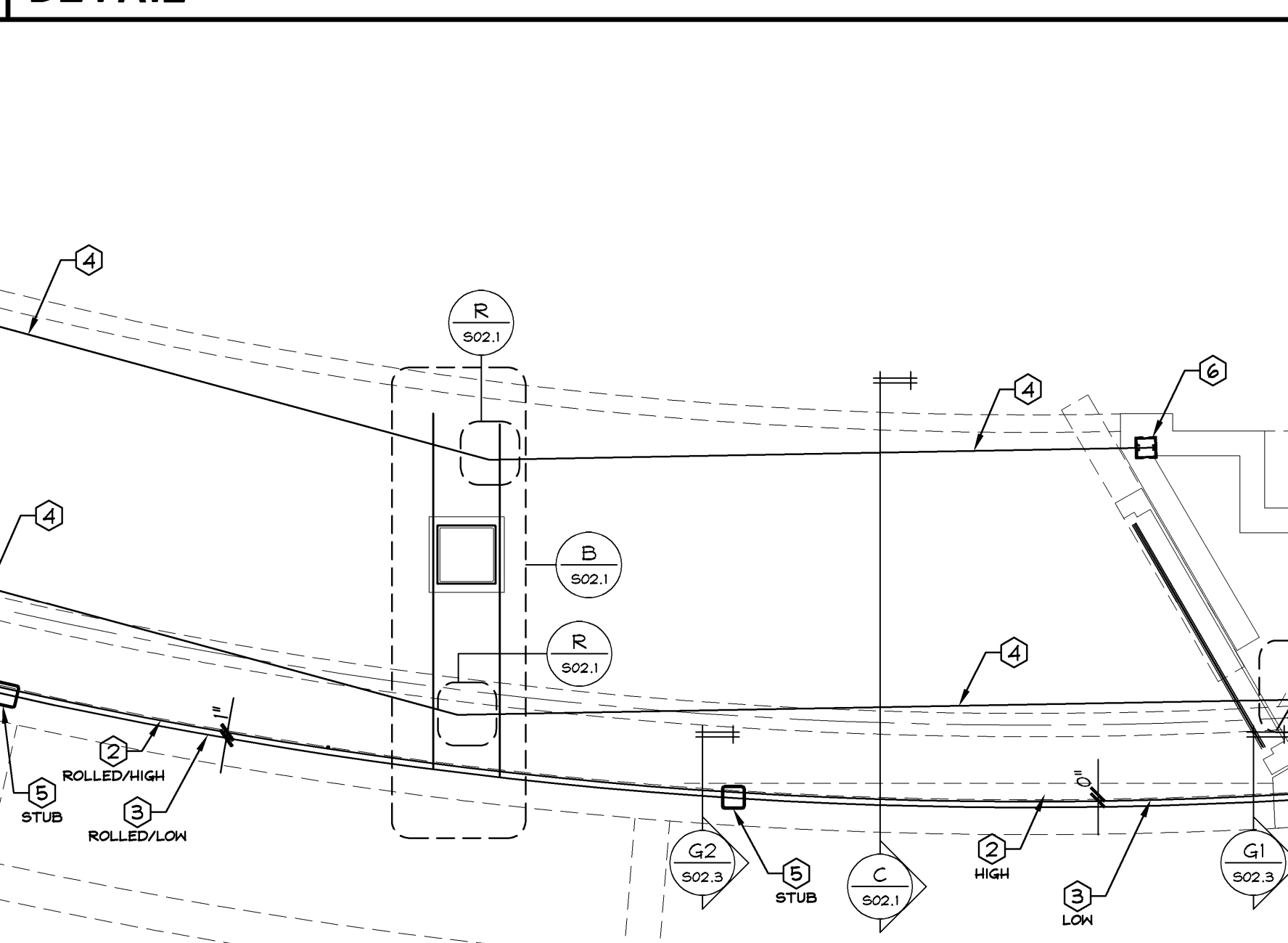
STOREFRONT FRAMING PLAN 1/2" = 1'-0" A



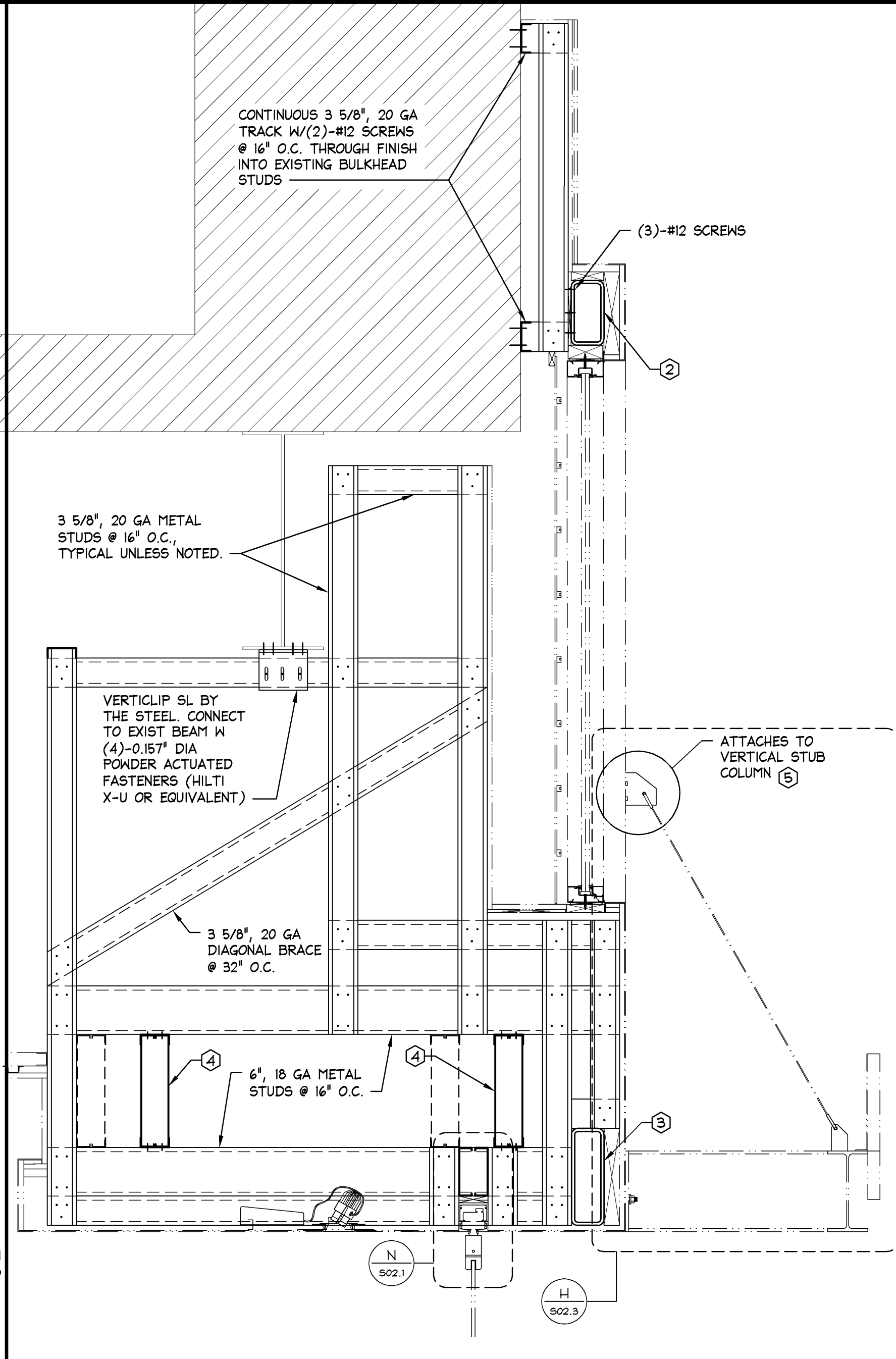
STOREFRONT SECTION 1" = 1'-0" G



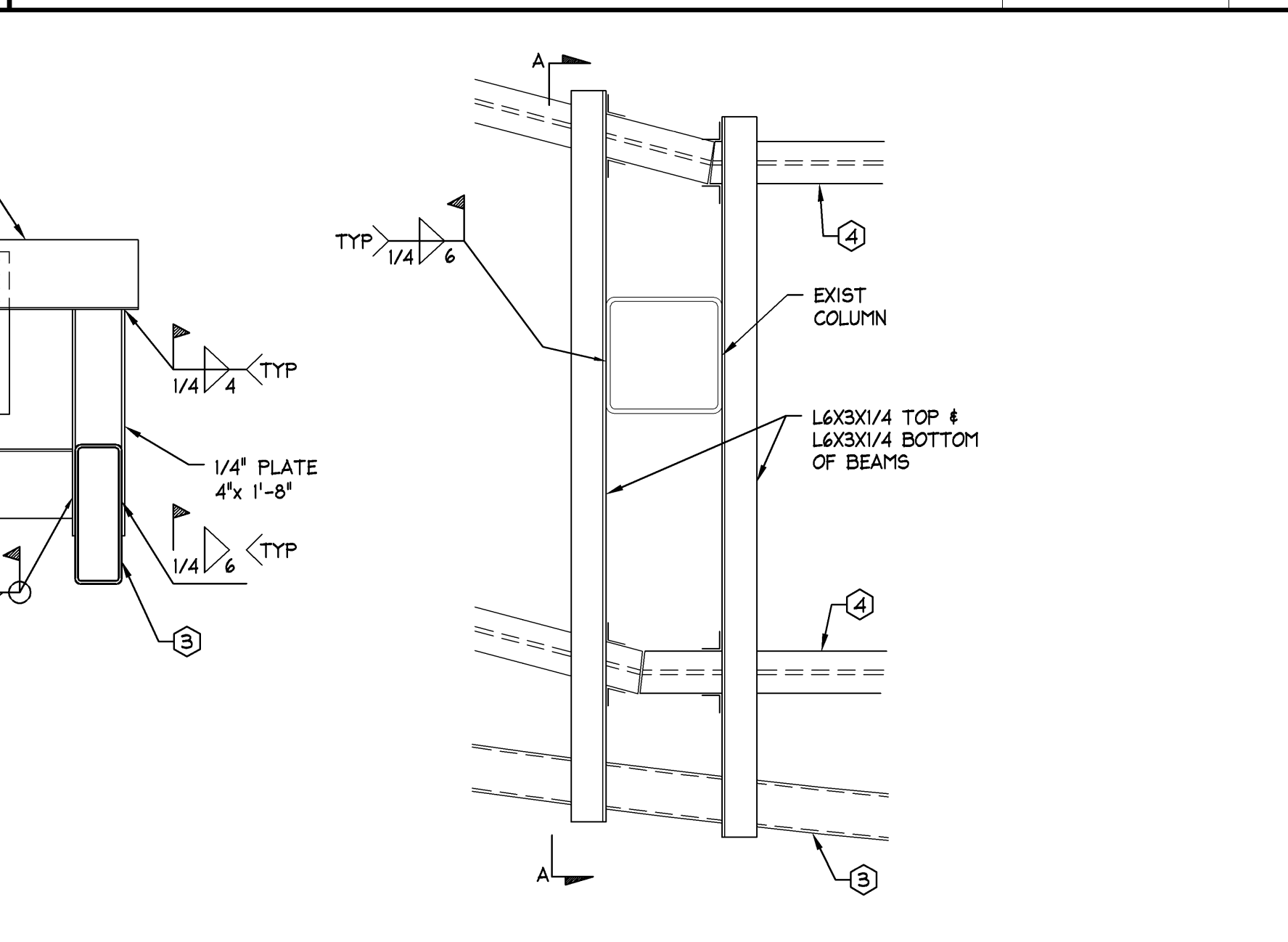
DETAIL N.T.S. K



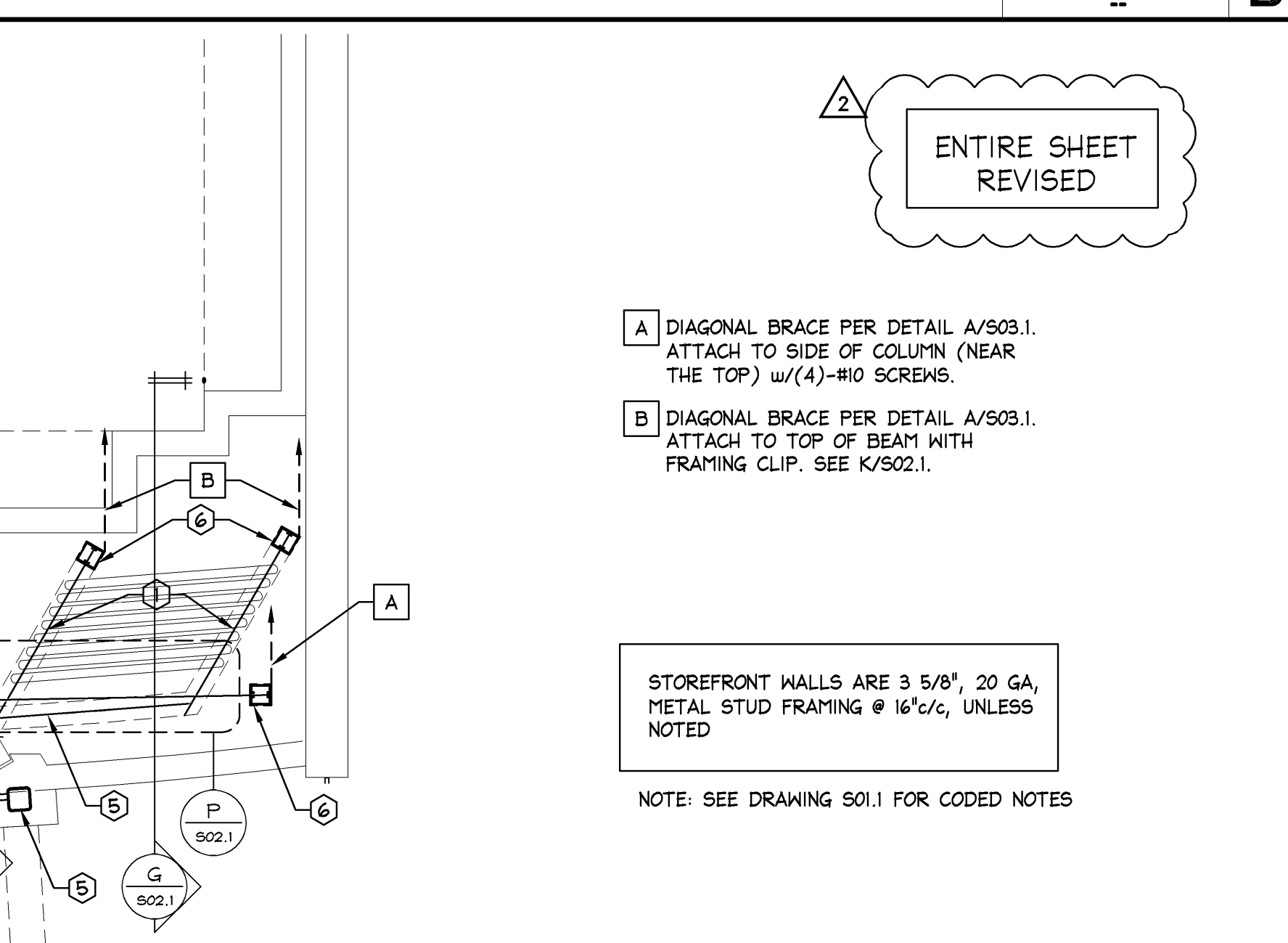
STOREFRONT FRAMING PLAN 1/2" = 1'-0" A



STOREFRONT SECTION 1" = 1'-0" C



DETAIL N.T.S. K



STOREFRONT FRAMING PLAN 1/2" = 1'-0" A

MOODY-NOLAN
responsive architecture
300 Spruce Street Suite 300
Columbus, Ohio 43215
Phone: (614) 461-4664
Fax: (614) 260-8881
www.moodynolan.com

PAUL J FORD AND COMPANY
250 EAST BROAD STREET
SUITE 600
COLUMBUS, OHIO 43215
614-221-6679
A26613-0012
CORPORATE REGISTRATION
No. F-002728

Limitedbrands
LIMITED STORE PLANNING, INC.
d/b/a STORE DESIGN & CONSTRUCTION
Three Limited Parkway - Columbus, Ohio 43230
Telephone: 614.415.7000 • Fax: 614.415.7349

024200396

BATH & BODY WORKS
MEMORIAL CITY MALL
503 MEMORIAL CITY WAY
SUITE 733
HOUSTON, TX 77024
RELO DOWN / NEW
EASTON-G
60685
A/E PROJECT #:

14150
13643

PROJECT INFORMATION:

REVISIONS:

DATE ISSUED: 04/11/2014
DESIGNED BY: SLH
DRAWN BY: SMA
CHECKED BY: GDK

SCOPE: DESIGN TYPE: LSD&C PROJECT #:

ENTIRE SHEET REVISED

A DIAGONAL BRACE PER DETAIL A/S03.1. ATTACH TO SIDE OF COLUMN (NEAR THE TOP) w/(4)-#10 SCREWS.

B DIAGONAL BRACE PER DETAIL A/S03.1. ATTACH TO TOP OF BEAM WITH FRAMING CLIP. SEE K/S02.1.

STOREFRONT WALLS ARE 3 5/8", 20 GA METAL STUD FRAMING @ 16" O.C., UNLESS NOTED

NOTE: SEE DRAWING S01.1 FOR CODED NOTES

DRAWING NUMBER:

S02.1